

# Gemba

## Industry Reporting

GREYHOUNDS AUSTRALASIA

FEBRUARY 2022



# CONTENTS

01.  
BACKGROUND

02.  
PROCESS

03.  
KEY ISSUES

04.  
DATA DEFINITIONS

05.  
REPORTING

06.  
NEXT STEPS

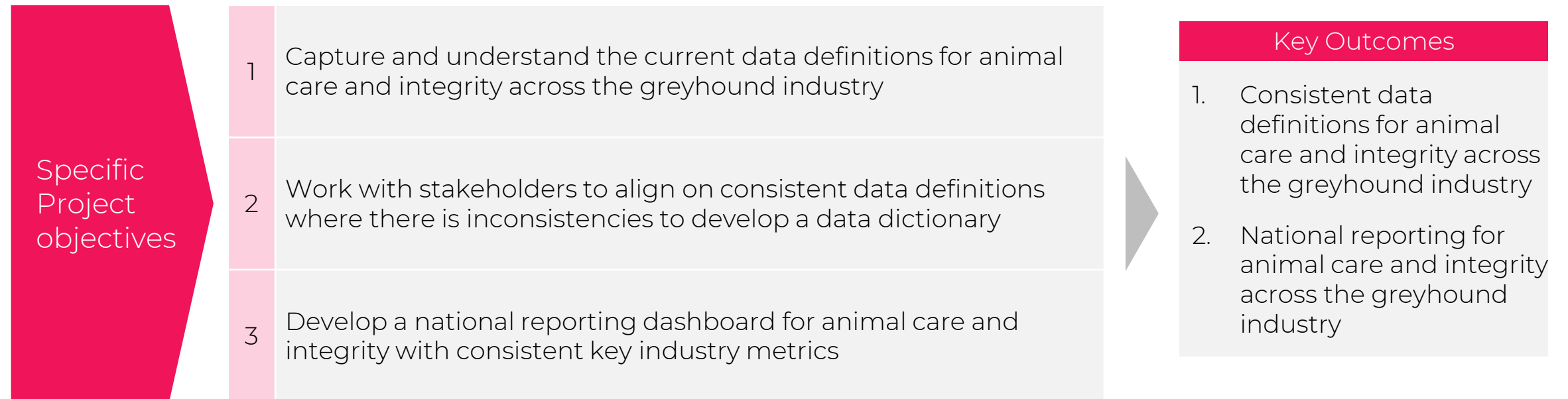
# Gemba

01

BACKGROUND

# The objective of this project is to align data definitions for animal care and integrity to improve national reporting

## KEY OBJECTIVES



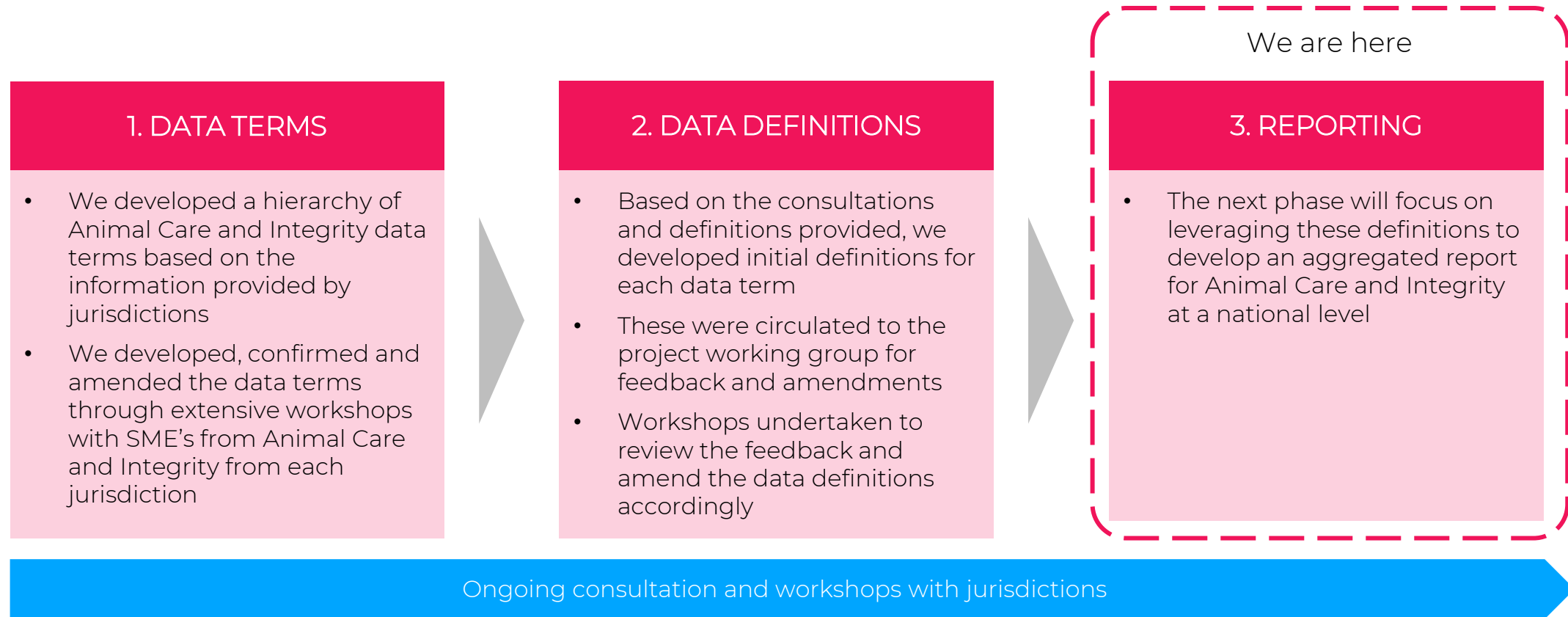
# Gemba

02

| PROCESS

# We developed the Animal Care and Integrity data definitions in collaboration with all jurisdictions

## PROCESS OVERVIEW



# Gemba

03

| KEY ISSUES

# Consistent issues were raised / identified during stakeholder consultations

## KEY ISSUES

Category	Description	Solution
Euthanasia and death	<ul style="list-style-type: none"> <li>Euthanasia and death definitions must differentiate between racing and non-racing related injuries</li> <li>These definitions must be simple to avoid difficulties in recording euthanasia and death</li> </ul>	<ul style="list-style-type: none"> <li>Definitions were developed to capture on and off-track euthanasia/death in a logical time-based manner</li> </ul>
Race injuries	<ul style="list-style-type: none"> <li>Current race injury reporting, based on stand down period, was insufficient and that it should be based on type of injury</li> </ul>	<ul style="list-style-type: none"> <li>The current race injury definitions were retained with slight adjustments to wording</li> </ul>
Retirement – GAP	<ul style="list-style-type: none"> <li>The GAP process varies between jurisdictions and therefore the GAP definition cannot be standardised e.g. pre-assessment for GAP</li> </ul>	<ul style="list-style-type: none"> <li>Definitions have been developed to account for the most important metrics of GAP e.g. number of greyhounds adopted, while non-standard process such as pre-assessment have been excluded</li> </ul>
Breeding	<ul style="list-style-type: none"> <li>Breeding greyhounds are currently counted as retired, however, they should still be considered as part of the industry</li> </ul>	<ul style="list-style-type: none"> <li>The definition <i>Greyhound registered for breeding purposes</i> now considers they greyhound as active and part of the industry</li> </ul>
General	<ul style="list-style-type: none"> <li>Greyhounds and statistics must not be double counted</li> <li>For example, a greyhound rehomed twice must be counted as 1 greyhound rehomed, and 2 rehoming activities</li> </ul>	<ul style="list-style-type: none"> <li>Where appropriate, data definitions have been developed to capture a unique event as well as each individual event</li> </ul>



# Gemba

04

## | DATA TERMS AND DEFINITIONS

# We have developed national data terms to be used in Animal Care and Integrity

## DATA TERM MAPPING – ANIMAL CARE

1. Animal Care and Integrity						
1. Animal care						
1. Breeding / servicing	2. Whelping	3. Registration / Utilisation	4. Injury	5. Retirement - GAP		6. Retirement (non-GAP)
1. Greyhound registered for breeding purposes	1. Litters whelped	1. Pup registered	1. Category A	1. Unique greyhound transferred to GAP	2. Greyhound transferred to GAP	1. Greyhound retained by registered person
2. Greyhound service	2. Pups whelped	2. Litters registered	2. Category B	3. Unique greyhound adopted through GAP	4. Greyhound adopted through GAP	2. Greyhound rehomed to third party
3. Missed service	3. Whelping type	3. Greyhound named	3. Category C	5. Unique greyhound returned to GAP	6. Greyhound returned to GAP	3. Greyhounds transferred to and/or rehomed by a rehoming group
4. Type of service		4. Greyhound with at least 1 race start	4. Category D	7. Euthanasia at GAP	8. Deceased at GAP	4. Greyhound donated to clinical/research organisation
		5. Greyhound transfer	5. Category E			
			6. Category F			
			7. Category G			
			8. Post-race Veterinary Examination			

# We have developed national data terms to be used in Animal Care and Integrity

## DATA TERM MAPPING – ANIMAL CARE

### 7. Euthanasia/Deceased

1. Greyhound euthanised due to injury	2. Greyhound euthanised due to race injury at track
3. Greyhound euthanised due to race injury off track	4. Greyhound euthanised due to medical condition
5. Greyhound euthanised due medical condition at track	6. Greyhound euthanised due to behaviour or legal reasons
7. Greyhound died due to injury	8. Greyhound died due to injury at track
9. Greyhound died due to medical condition or natural cause	10. Greyhound died due medical condition at track

# We have developed national data terms to be used in Animal Care and Integrity

## DATA TERM MAPPING – INTEGRITY

1. Animal Care and Integrity					
2. Integrity					
1. Testing		2. Steward inquiries	3. Infringements / Penalties		4. Inspections
1. Sample taken	2. Positive sample	1. Steward inquiry	1. Participants charged	2. Greyhound related offence	1. Kennel / property inspections
3. Samples taken in competition	4. Positive samples in competition	2. Confidential information	3. Notice to comply issued	4. Appeal	2. Unique kennel / property inspections
5. Samples taken out of competition	6. Positive samples out of competition		5. Disqualification	6. Fine	3. Compliant kennel / property
7. Winners swabbed	8. Greyhound sampled		7. Suspension	8. Reprimand	4. Non-compliant kennel / property`
9. Sample matrix	10. Types of race day sample		9. Warn off	10. Cancellation of a registration or a license	5. Proportion of kennels / properties inspected
					6. Registered kennel / property

# Animal Care and Integrity data definitions

## 1.1 BREEDING AND SERVICING

Data term	Definition
1.1.1. Greyhound registered for breeding purposes	A greyhound that has been registered for breeding to the Controlling Body, either sire or dam, and is still considered an active greyhound in the industry
1.1.2. Greyhound service	(a) a natural service comprising a physical mating; and/or (b) a mating by artificial insemination (insemination by any method other than a natural method).
1.1.3. Missed service	A <i>Greyhound Service</i> that results in a nil whelping
1.1.4. Type of service	(a) a natural service comprising a physical mating; or (b) a mating by artificial insemination, including surgical, TCI and vaginal

# Animal Care and Integrity data definitions

## 1.2 WHELPING

Data term	Definition
1.2.1 Litter whelped	A litter of pups, including where some or all pups are still born, that is produced by a breeding female
1.2.2 Pups whelped	An individual pup, either alive or still born, that is produced by a breeding female.
1.2.3 Whelping type	(a) Natural whelping (b) caesarean section,  Where the whelping included both natural and caesarean section, the whelping will be recorded as a caesarean section

# Animal Care and Integrity data definitions

## 1.3 REGISTRATION / UTILISATION

Data term	Definition
1.3.1 Litters registered	A litter that has been registered in accordance with Rule 64 of the Greyhounds Australasia Rules (Greyhounds Australasia Rules effective January 2022)
1.3.2 Pup registered	A greyhound pup born in a registered litter which is registered in accordance with Rule 64 of the Greyhounds Australasia Rules (Greyhounds Australasia Rules effective January 2022)
1.3.3 Greyhound named	A greyhound which has been named under the Greyhound Australasia Rules
1.3.4 Greyhounds with at least 1 race start	A named and registered greyhound that has started in a <i>Race</i> as defined in the Greyhounds Australasia rules, in any jurisdiction
1.3.4 Greyhound transfer	A registered greyhound that is transferred from one <i>Registered Person</i> to another <i>Registered Person</i>

# Animal Care and Integrity data definitions

## 1.4 RACE INJURY

Data term	Definition
1.4.1 Category A	Race injuries, where the injury occurred on track in a <i>Race</i> and identified post race by the On-Track Veterinarian after a post race veterinary examination, given no stand down period by the officiating veterinarian, which are typically incidental findings such as skin abrasions and are expected to not need any additional time off prior to racing. It excludes greyhounds examined and found not to be injured (No apparent injury / No anomaly detected)
1.4.2 Category B	Race injuries, where the injury occurred on track in a <i>Race</i> and identified post race by the On-Track Veterinarian after a post race veterinary examination, given a stand down period of 3-10 days by the officiating veterinarian, which are typically mild muscle soreness, or other minor injuries that are generally expected to recover within a short time period prior to being able to race again
1.4.3 Category C	Race injuries, where the injury occurred on track in a <i>Race</i> and identified post race by the On-Track Veterinarian after a post race veterinary examination, given a stand down period of 11-27 days by the officiating veterinarian, which are typically lacerations, joint sprains, or muscle injuries (Grade 2), or other forms of soreness and are generally expected to recover within that time period prior to being able to race again
1.4.4 Category D	Race injuries, where the injury occurred on track in a <i>Race</i> and identified post race by the On-Track Veterinarian after a post race veterinary examination, given a stand down period 28-90 days by the officiating veterinarian, which are typically more significant muscle tears, bone fractures or other injuries that require a greater amount of treatment and recovery. These injuries may or may not race again depending on severity, prognosis and treatment
1.4.5 Category E	Any greyhound that died during a race or was euthanised by the officiating veterinarian due to the catastrophic nature of the injury sustained. Note: this will include a small number of medical conditions
1.4.5 Category F	Includes all Category E incidents as well as those within Category D that are deemed to be of a particular serious nature. The following are included: <ul style="list-style-type: none"> <li>o death or euthanasia on-track;</li> <li>o any skull or spine fracture or paralysis (partial or complete);</li> <li>o any long bone fracture (i.e. humerus, radius/ulna, femur or tibia);</li> <li>o a hock fracture/dislocation where the stand-down period is 60 or 90 days;</li> <li>o any other fracture where the stand-down period is 60 or 90 days;</li> <li>o any other joint injury where the stand-down period is 60 or 90 days;</li> <li>o a skin injury where the stand-down period is 60 or 90 days;</li> <li>o a soft tissue injury (including muscle injury) where the stand-down period is greater than 90 days.</li> </ul>
1.4.6 Category G	Includes any injury in Categories A to C and those in Category D that do not fit the definition of a Serious injury (i.e. Category F)
1.4.7 Post-race Veterinary Examination	An examination performed by the officiating Veterinarian after an <i>Event</i> to determine the presence or absence of an injury / condition, that may result in a stand-down period being issued for the <i>greyhound</i> .



# Animal Care and Integrity data definitions

## 1.5 RETIREMENT - GAP

Data term	Definition
1.5.1 Unique Greyhound transferred to GAP	A greyhound that has been transferred or surrendered to GAP for the first time
1.5.2 Greyhound transferred to GAP	A greyhound that has been transferred or surrendered to GAP
1.5.3 Unique Greyhound adopted through GAP	A greyhound that has been adopted through GAP for the first time, and has not been returned within the Controlling Bodies cooling off period
1.5.4 Greyhound adopted through GAP	A greyhound that has been adopted through GAP, and has not been returned within the Controlling Bodies cooling off period
1.5.5 Unique greyhound returned to GAP	A greyhound that has been returned to GAP for the first time regardless of the number of prior adoptions through other adoption organisations, and has not been returned within the Controlling Bodies cooling off period
1.5.6 Greyhound returned to GAP	A greyhound that has been returned to GAP subsequent to the greyhound being adopted, and has not been returned within the Controlling Bodies cooling off period
1.5.7 Euthanasia at GAP	A greyhound that has been euthanised while under the responsibility of GAP for any reason
1.5.8 Deceased at GAP	A greyhound that has died while under the responsibility of GAP for any reason

# Animal Care and Integrity data definitions

## 1.6 RETIREMENT – NON GAP

Data term	Definition
1.6.1 Greyhound retained by a registered person	A greyhound that is retired from the industry and retained by a Registered Person
1.6.2 Greyhound rehomed to third party	A greyhound that is retired and transferred to an individual who is not a Registered Person, excluding rehoming and adoption groups
1.6.3 Greyhound transferred to and/or rehomed by a rehoming group	A greyhound that is retired and transferred or surrendered to a rehoming group or adoption program, excluding GAP, with the intentions of rehoming the greyhound
1.6.4 Greyhound donated to clinical/research organisation	A greyhound that has been donated to an organisation for clinical or research purposes

# Animal Care and Integrity data definitions

## 1.7 EUTHANASIA/DECEASED

Data term	Definition
1.7.1 Greyhound euthanised due to injury	A greyhound that has been euthanised due to an injury where the greyhound is an active greyhound
1.7.2 Greyhound euthanised due to race injury at track	A greyhound that has been euthanised due to injury at a race meeting after competing in an <i>Event</i> . This is a subset of <i>Greyhound euthanised due to injury</i>
1.7.3 Greyhound euthanised due to race injury off track	A greyhound that has been euthanised off track due to injury sustained at a race meeting, within 7 days of competing in the <i>Event</i> where the injury was sustained. This is a subset of <i>Greyhound euthanised due to injury</i>
1.7.4 Greyhound euthanised due to medical condition	A greyhound that has been euthanised due to a medical condition where the greyhound is an active greyhound
1.7.5 Greyhound euthanised due medical condition at track	A greyhound that has been euthanised due to a medical condition at a race meeting after competing in an <i>Event</i> . This is a subset of <i>Greyhound euthanised due to a medical condition</i>
1.7.6 Greyhound euthanised due to behaviour or legal reasons	A greyhound that has been euthanised due to behavioural or legal reasons where the greyhound is an active greyhound
1.7.7 Greyhound died due to injury	A greyhound that has died due to injury where the greyhound is an active greyhound
1.7.8 Greyhound died due to injury at track	A greyhound that has died due to injury at a race meeting after competing in an <i>Event</i> . This is a subset of <i>Greyhound died due to injury</i>
1.7.9 Greyhound died due to medical condition or natural cause	A greyhound that has died due to a medical condition, or an undetermined or open diagnosis, where the greyhound is an active greyhound
1.7.10 Greyhound died due medical condition at track	A greyhound that has died due to a medical condition at a race meeting after competing in an <i>Event</i> . This is a subset of <i>Greyhound died due to a medical condition</i>

# Animal Care and Integrity data definitions

## 2.1 TESTING

Data term	Definition
2.1.1 Sample taken	Refers to any biological material, identified in the sample matrix, collected from a greyhound for the purposes of the Greyhound Australasia Rules. A sample includes an aliquot or portion of a whole sample.
2.1.2 Positive sample	A sample for which a certificate of analysis has been issued by an approved laboratory in relation to the finding of a prohibited substance in that sample (including appropriate confirmation of the B sample and control sample).
2.1.3 Sample taken in competition	A sample taken from a greyhound <i>Presented</i> for an Event
2.1.4 Positive sample in competition	A 'positive sample' from a 'sample taken in competition'
2.1.5 Sample taken out of competition	A sample taken from a greyhound that is not at the time presented for an Event
2.1.6 Positive sample out of competition	A 'positive sample' from a 'sample taken out of competition'
2.1.7 Winner sampled	A sample taken in competition from a greyhound that is the winner of the Event (could be pre or post race)
2.1.8 Greyhound sampled	An individual registered greyhound from which a sample has been taken, in which a greyhound can be sampled multiple times during the period
2.1.9 Sample matrix	Includes a swab of saliva, urine, perspiration, breath, blood, tissue, hide, hair, or any other excretion, product or body fluid
2.1.10 Types of race day samples	(a) Pre race (b) post race

# Animal Care and Integrity data definitions

## 2.2 STEWARDS INQUIRIES

Data term	Definition
2.2.1 Steward Inquiry	An inquiry relating to a <i>Registered Person, Person</i> or <i>Greyhound</i> in connection to a potential breach of the rules of racing
2.2.2 Intel report	Confidential information received from an individual or organisation

# Animal Care and Integrity data definitions

## 2.3 INFRINGEMENTS / PENALTIES

Data term	Definition
2.3.1 Participant charged	A <i>Person</i> that has been charged in relation to a potential breach of the rules of racing, or relevant Act
2.3.2 Greyhound related offence	An offence committed by a greyhound that requires it to undergo a satisfactory trial, is stood down (non-injury related), or a Boxed First
2.3.3 Notice to comply issued	A notice issued by a steward or authorised person which requires a participant to fix a breach of the rules of racing, code of practice or other relevant policy
2.3.4 Appeals	An application to vary or revoke a decision imposed on a participant or <i>Greyhound</i> relating to the outcome of the decision or the related penalty
2.3.5 Disqualification	In relation to a person or greyhound means disqualified by a Controlling Body or the Stewards or pursuant to the rules of any approved controlling authority or thoroughbred, harness or greyhound racing Club
2.3.6 Fine	Monetary charges imposed upon participants who have been found guilty of an offence
2.3.7 Suspension	Means the withdrawal for any period of any registration, licence, right or privilege granted pursuant to the Rules.
2.3.8 Reprimand	An official warning issued by the Stewards
2.3.9 Warn off	Means to direct that a particular person shall not be permitted to enter or remain on any part of the ground or premises where a Greyhound Meeting or trial is being held for a determined period of time. Warning off and Warned off shall have a corresponding meaning. Note: A person who is warned off is subject to the same consequences and restrictions as a person who has been disqualified under the Greyhound Australasia Rules.
2.3.10 Cancellation of a registration or a licence	The revocation of a participant's registration or licence from the industry

# Animal Care and Integrity data definitions

## 2.4 INSPECTIONS

Data term	Definition
2.4.1 Kennel / property inspections	An inspection of a property which includes at least one kennel, where kennels on the property are inspected in accordance with the Controlling Body's inspection guidelines
2.4.2 Unique kennel / property inspections	An inspection of a property which includes at least one kennel, where kennels on the property are inspected in accordance with the Controlling Body's inspection guidelines for the first time in a given reporting period
2.4.3 Compliant kennel / property	Kennels constructed and of a standard approved by a Controlling Body which are adequate in size, and which are kept in a clean and sanitary condition
2.4.4 Non-compliant kennel / property	Kennels that fail to meet the minimum requirements to be categorised as a compliant kennel
2.4.5 Proportion of kennels / properties inspected	The ratio of number of unique kennels inspected to the number of registered kennels in a defined time period
2.4.5 Registered kennel / property	A kennel that has been registered with the controlling body

**Gemba**

05

| NATIONAL REPORTING



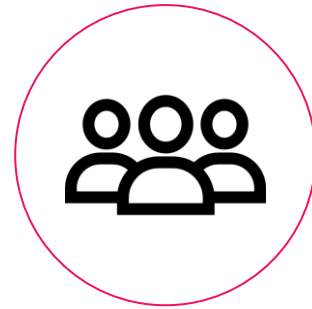
In phase 2, a national reporting dashboard for Animal Care and Integrity will be delivered leveraging the definitions defined in Phase 1

## ANIMAL CARE AND INTEGRITY DASHBOARD OVERVIEW



### Purpose

To aggregate national reporting for Animal Care and Integrity in a dashboard to understand industry trends that help inform decisions



### Audience

To be developed for internal purposes only for use by the GA Board and Jurisdiction CEO's



### Frequency

In the first instance, national reporting will be undertaken quarterly until it can be fully automated



### Data Sources

Data will need to be extracted from key systems including OzChase, Fasttrack, RandLE, OneGov

# Key metrics have been prioritised based on importance

## ANIMAL CARE AND INTEGRITY DASHBOARD PRIORITISATION

Data definition prioritisation list example:

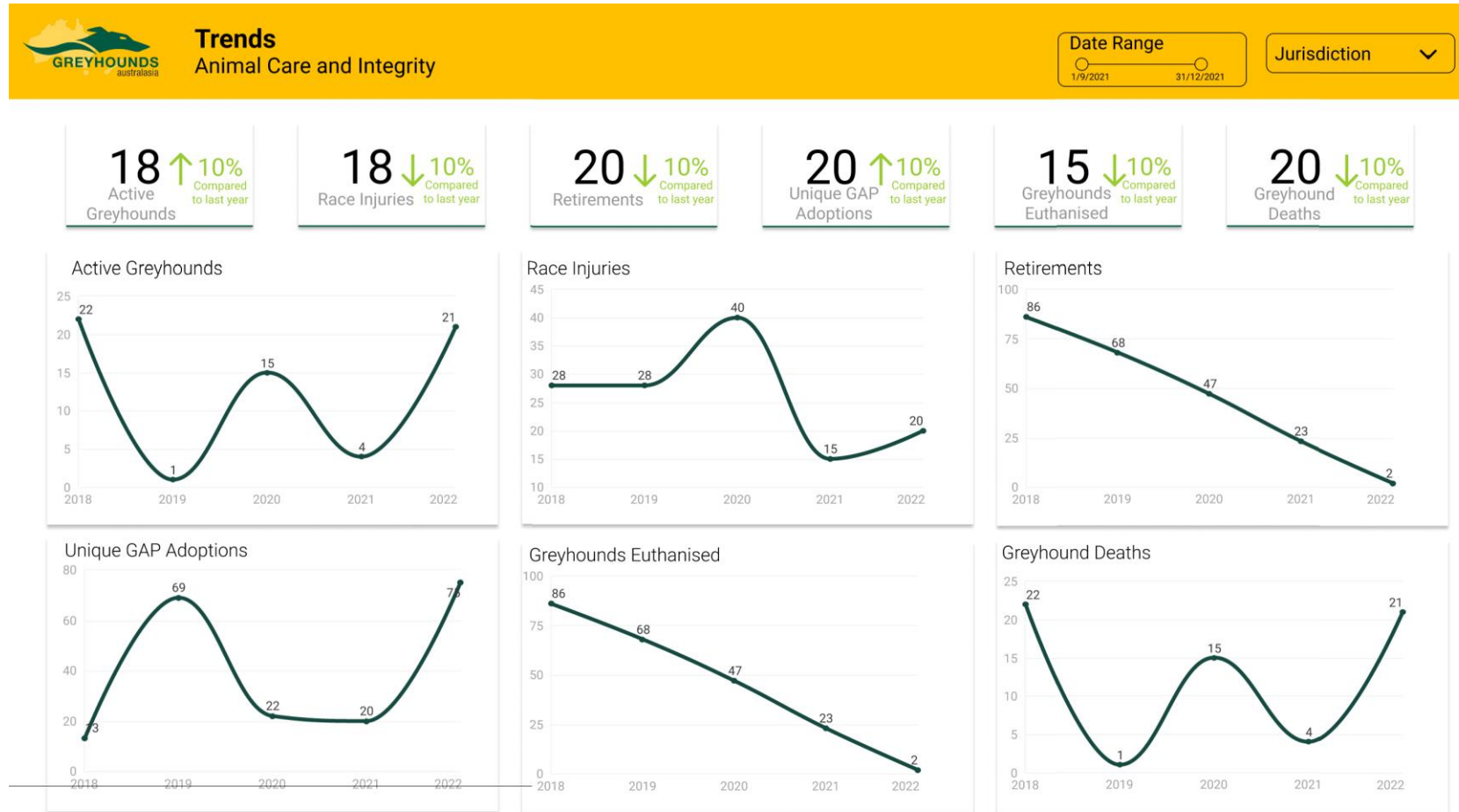
Category 1	Category 2	Category 3	Category 4	Definition	Dashboard Priority
Animal care					
Animal care and integrity	Animal care	Breeding / servicing	Greyhound registered for breeding purposes	A greyhound that has been registered for breeding to the Controlling Body, either sire or dam, and is still considered an active greyhound in the industry	1
Animal care and integrity	Animal care	Breeding / servicing	Greyhound service	(a) a natural service comprising a physical mating; and/or (b) a mating by artificial insemination (insemination by any method other than a natural method).	1
Animal care and integrity	Animal care	Breeding / servicing	Missed service	A <i>Greyhound Service</i> that results in a nil whelping	1
Animal care and integrity	Animal care	Breeding / servicing	Type of service	(a) a natural service comprising a physical mating; or (b) a mating by artificial insemination, including surgical, TCI and vaginal	1
Animal care and integrity	Animal care	Whelping	Litter whelped	A litter of pups, including where some or all pups are still born, that is produced by a breeding female	1
Animal care and integrity	Animal care	Whelping	Pups whelped	An individual pup, either alive or still born, that is produced by a breeding female.	1
Animal care and integrity	Animal care	Whelping	Whelping type	(a) Natural whelping (b) caesarean section,  Where the whelping included both natural and caesarean section, the whelping will be recorded as a caesarean section	3

### Metric prioritisation

- The dashboard will be developed using metrics that are deemed the highest priority:
  - Category 1: High priority and must be included in the dashboard
  - Category 2: Medium priority and will be included after all Category 1 metrics are delivered
  - Category 3: Low priority and may not be required for reporting purposes

We have developed an early version of what a national Animal Care and Integrity reporting dashboard could look like

NATIONAL ANIMAL CARE AND INTEGRITY REPORTING



# We have developed an early version of what a national Animal Care and Integrity reporting dashboard could look like

## ACTIVE GREYHOUNDS REPORTING

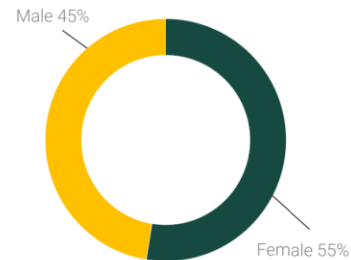
 **Active Greyhounds**  
Animal Care and Integrity

Date Range: 1/9/2021 to 31/12/2021

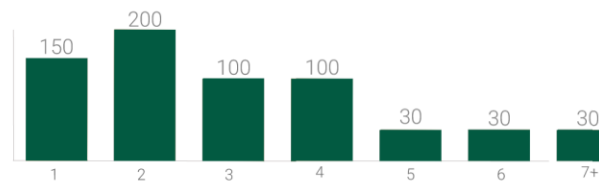
Jurisdiction:

640 ↑10%  
Total Greyhounds

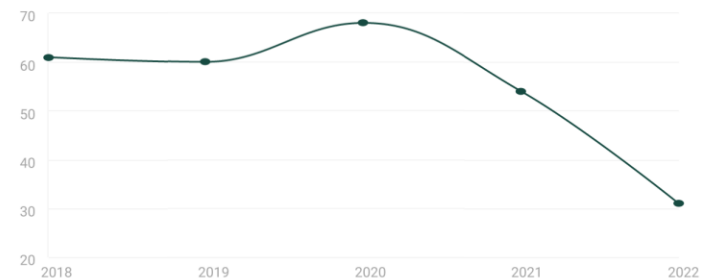
Greyhounds by Gender



Number of Greyhounds by Age



Number of Greyhounds

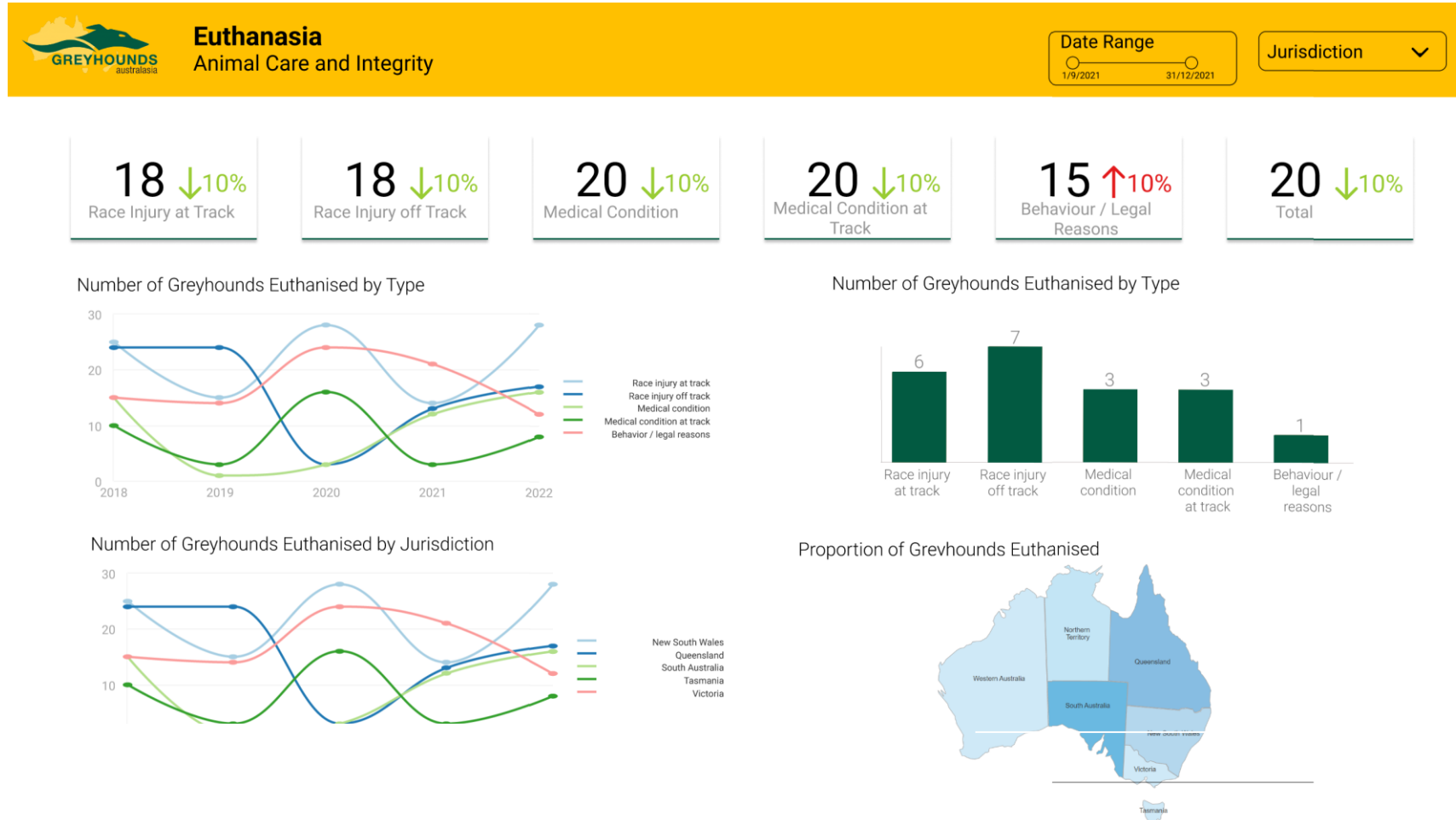


Number of Greyhound



# We have developed an early version of what a national Animal Care and Integrity reporting dashboard could look like

## EUTHANASIA REPORTING



# Gemba

06

| NEXT STEPS

# There are some key next steps to finalise the data definitions and national reporting for Animal Care and Integrity

## NEXT STEPS

1. Data definitions to be signed off by relevant parties - CEO / Boards
2. Animal Care and Integrity National Dashboard Wireframe
3. Dashboard and key metrics to be signed sign off by CEOs
4. Data source investigations with jurisdictions
5. Development of the National Dashboard in PowerBI
6. Dashboard user testing
7. Dashboard approval and deployment
8. User training as required

# Gemba

SPORT. ENTERTAINMENT.